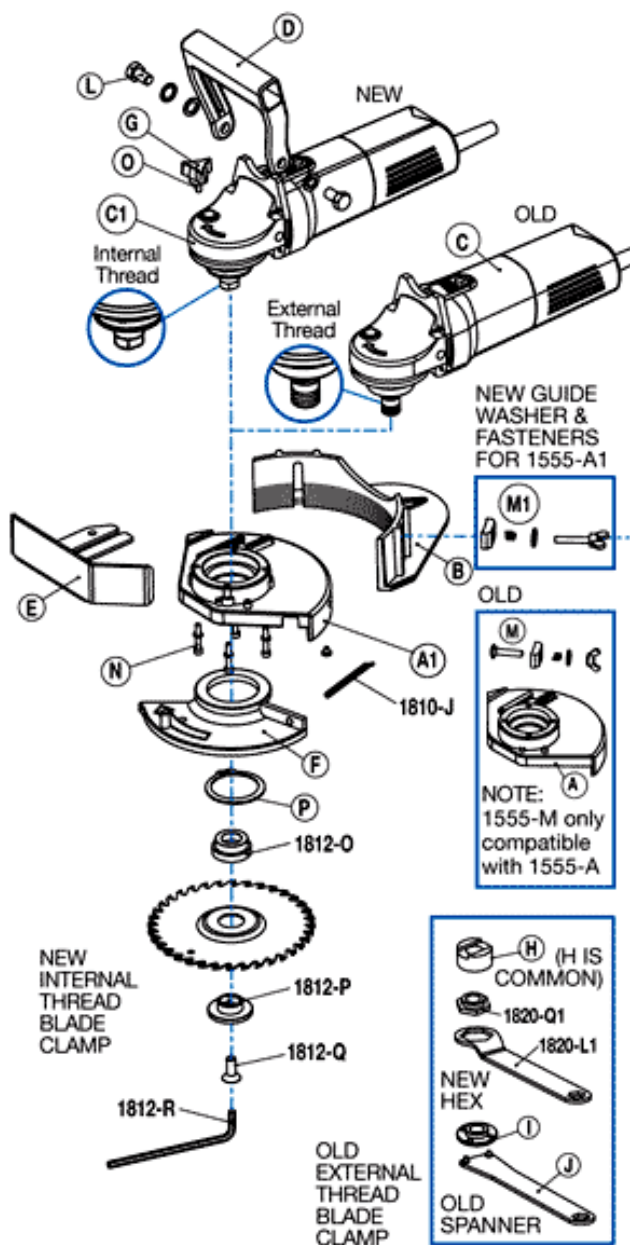
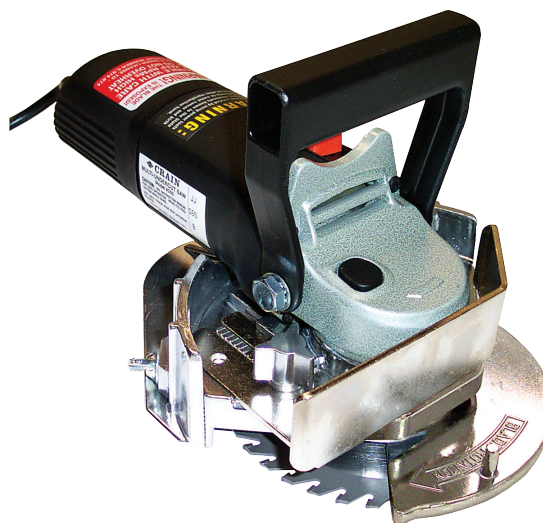


Parts Diagram

GUNDLACH

No. 555 Multi-Undercut Saw



Item No.	Description	List Price
1555-A1	New Housing	\$43.67
1555-B	Height Adjuster	\$45.65
1555-C1	New 120V Power Unit	\$65.45
1555-CV1	New 220V Power Unit	\$65.45
1555-D	Plastic Handle	\$8.25
1555-E	Depth Gauge	\$16.83
1555-F	Blade Guard	\$10.45
1555-G	Three-Arm Knob	\$5.61
1555-H	Blade Driver	\$10.23
1555-I	Old Blade Clamp Nut	\$17.49
1555-J	Old Spanner Wrench	\$5.61
1555-K	Brush Set (2)	\$8.25
1555-L	Handle Fastener Set (4)	\$5.72
1555-M	Old Guide Washer & Fastener Set 10	\$6.82
1555-M1	New Guide Washer & Fastener Set 8	\$6.82
1555-N	Housing Fastener Set (4)	\$7.92
1555-O	Set Screw	\$5.83
1555-P	Snap Ring	\$5.83
1555-R	Carrying Case	\$15.95
1555-V	Toggle Switch (for old blue housing saws)	\$13.20
1555-V1	Marquardt Switch (for new black housing saws)	\$13.20
1555-W	Power Cord Relief Strain	\$5.00
1555-X	Return Spring Screw Only	\$3.50
1555-Z	Power Cord	\$13.75



Beno J. Gundlach Company

211 North 21st Street • P.O. Box 544
 Belleville, IL 62222 • U.S.A.
 TEL: 618 233-1781 • FAX: 618 233-3636
www.benogundlachco.com