

Instructions for

GUNDLACH

No. TD-1 Toilet Dolly

Moving toilets has never been so easy



U.S. Patent No. 5,184,653

The Toilet Dolly helps solve back strain and toilet or tub damage problems faced by tile setters and floor covering installers. To use, the toilet is lifted and bolted to the Toilet Dolly. Then tilt the toilet to self-flush residual clean bowl water into the reservoir base of the Toilet Dolly. After reinstallation of the toilet, the threaded end cap is removed for water disposal. The Toilet Dolly rolls on four heavy duty, ball bearing swivel casters. The Toilet Dolly includes two each Washers, hardware and a wrench for use with the casters. Measures 15" wide x 23 $\frac{1}{4}$ " long x 5 $\frac{7}{8}$ " high.

CAUTION: Do NOT roll a Toilet Dolly directly over flooring as the casters of the dolly may damage the floor. To move a Toilet Dolly over a floor, use $\frac{1}{4}$ " underlayment and roll the Toilet Dolly over the underlayment to help spread the weight of the dolly over the floor preventing damage to the floor.

How to Use the No. TD-1 Toilet Dolly

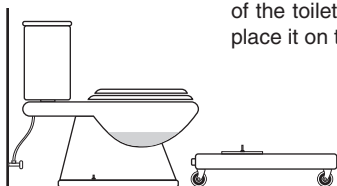
Step 1



The Toilet Dolly makes for easy carrying with the attached handle.

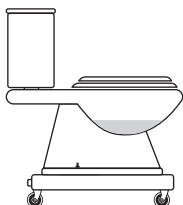
CAUTION: Do NOT roll a Toilet Dolly directly over flooring as the casters of the dolly may damage the floor. To move a Toilet Dolly over a floor, use $\frac{1}{4}$ " underlayment and roll the Toilet Dolly over the underlayment to help spread the weight of the dolly over the floor preventing damage to the floor.

Step 2



Shut off the water to the toilet and flush the tank. Disconnect the water supply and remove the nuts and washers securing the toilet. Position the Toilet Dolly in front of the toilet as shown. Lift the toilet and place it on the Toilet Dolly.

Step 3



Tighten the toilet to the Toilet Dolly with the washers and wing nuts (supplied with the Toilet Dolly) to prevent the toilet from moving.

Step 4



Tilt the Toilet Dolly slightly to allow the residual water in the bowl to self-flush into the water reservoir of the Toilet Dolly.

Step 5



The toilet can now be rolled out of the way.

Step 6



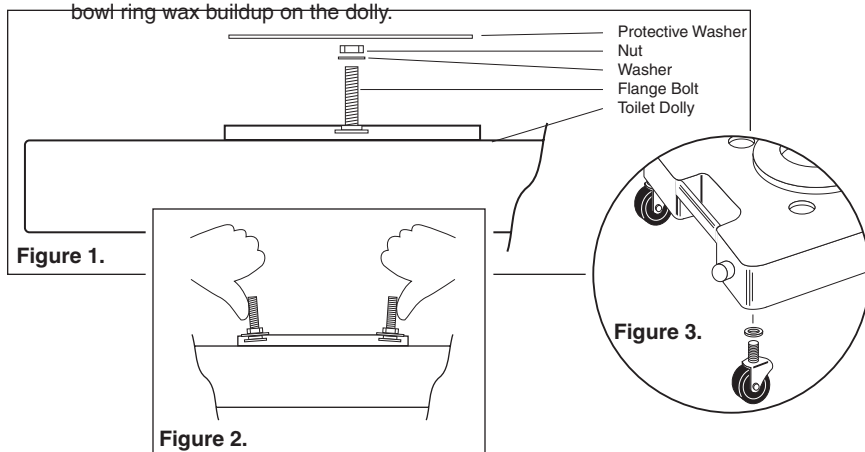
After the toilet has been reinstalled, the Toilet Dolly can be lifted by the handle allowing the water to flow to the bottom portion of the reservoir as shown. Remove the plastic drain cap and dispose the residual bowl water in a proper manner.

How to Assemble the No. TD-1 Toilet Dolly

The No. TD-1 Toilet Dolly is shipped unassembled to prevent possible shipping damage to the casters and the hardware used to secure the toilet to the dolly.

To assemble the toilet holding flange bolts, washers and nuts to the dolly:

1. Insert a flange bolt from the inside of the dolly as shown in Figure 1 below.
2. Place a washer over the flange bolt and thread a hex nut onto the bolt. Use a wrench to tighten the hex nut tight enough to draw the flange bolt up into the underside of the rim. This sets the flange bolt into place.
3. Repeat Steps 1 and 2 for the other flange bolt, washer and nut. **Note:** *If the flange bolts are not straight up and down, they need to be pushed straight. Place your thumbs, one on each bolt, and apply pressure to the bolts until straight as shown in Figure 2 below.*
4. Place a protective washer over the bolts. The protective washer is used to help minimize bowl ring wax buildup on the dolly.



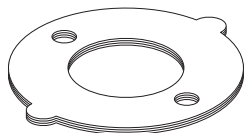
To assemble the casters to the dolly:

1. Place a washer over the caster threads and hand tighten the caster into a threaded insert on the underside of the dolly (see Figure 3 above). Repeat this for the remaining three casters.
2. Tighten each caster snugly into its threaded insert using the supplied $\frac{3}{4}$ " wrench.

CAUTION: Use of the Toilet Dolly for transporting or holding loads other than toilets may cause damage to the Toilet Dolly—and is done so at the user's risk.

WARNING: Do not stand or ride on the Toilet Dolly.

No. TD-1-PW Protective Washers



Coated, multiuse chipboard sheets help prevent wax bowl ring buildup on the Toilet Dolly. These 7" diameter chipboard sheets have $\frac{1}{2}$ " holes for positioning over the bolts and $\frac{1}{2}$ " oval tabs for easy removal. Sold four (4) each per package.



Beno J. Gundlach Company

211 North 21st Street • P.O. Box 544
Belleville, IL 62222 • U.S.A.
TEL: 618 233-1781 • FAX: 618 233-3636
www.benojgundlachco.com