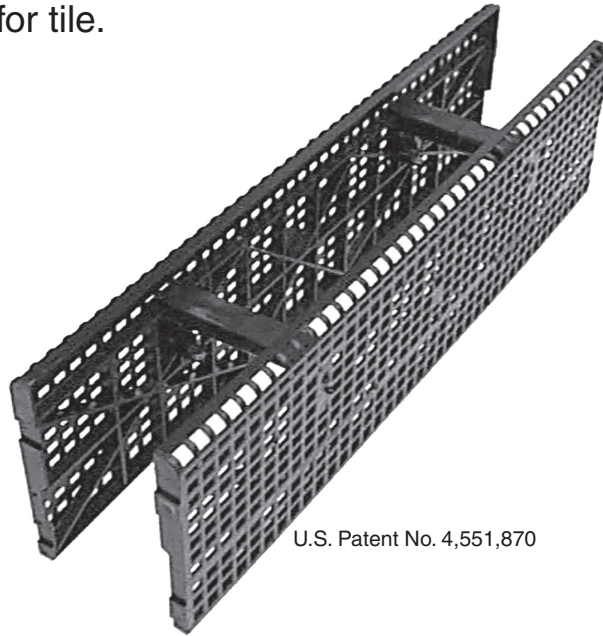


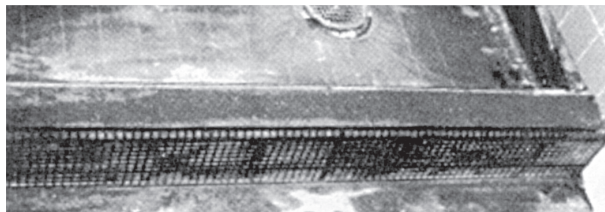
# “IT’S ABOUT TIME”

**No. 455 Quick Curb™** is a stay-in-place form that makes it possible to build and tile a 4' shower curb in about 23 minutes. Simply set in place, fill it with mortar, and you are ready for tile.

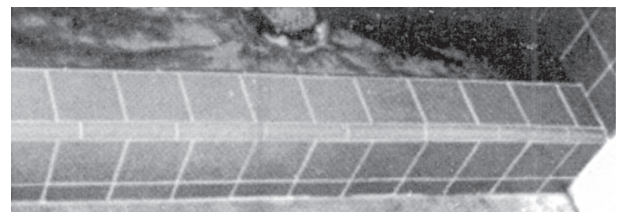


U.S. Patent No. 4,551,870

## Results of Timed Installation



Ready for tile in 6 minutes.



Total installation time 17 minutes.

- Reduce labor costs by 1 hour (approximate)
- Versatile—use radius or surface trim
- Minimize tile cutting
- Easier than conventional methods
- Always straight
- Cuts with a hacksaw, snips or knife
- Solid masonry and plastic—impervious to moisture
- Simple enough for a beginner

“YES, IT’S ABOUT TIME!” and Making You Money!

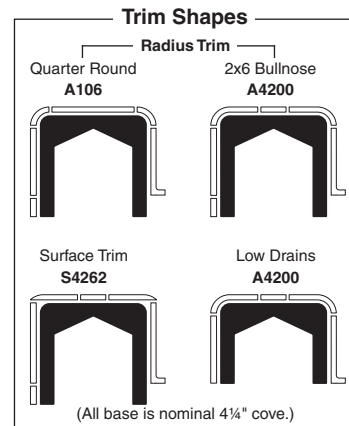
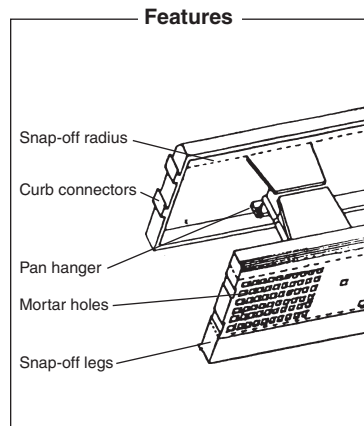


### **Beno J. Gundlach Company**

211 North 21st Street • P.O. Box 544  
Belleville, IL 62222 • U.S.A.  
TEL: 618 233-1781 • FAX: 618 233-3636  
[www.benojgundlachco.com](http://www.benojgundlachco.com)

# No. 455 Quick Curb™ Installation Procedure

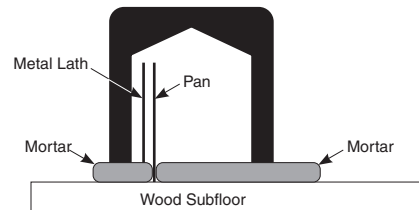
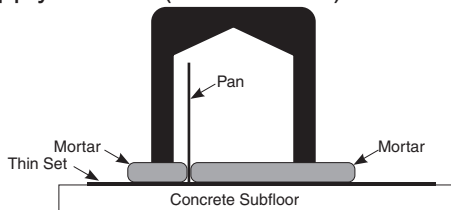
Quick Curb™ has designed versatility to provide for a variety of different trim shapes, drain heights and nominal 4¼" tile. Quick Curbs are 5" wide x 24" long x 6¼" high.



## Three Wall Showers

### Step 1

- Install shower pan liner (pan) according to local code. Allow approximately 6½" in height where inserted into curb.
- Connect and cut curbs to desired length. (Low drains and surface trim can be accommodated by snap offs as shown above.)
- Apply thin set (or metal lath) as shown below.



- Place approximately 2" of loosely packed floor type mortar on both sides of pan.
- Position curb and secure the pan by piercing it over the pan hangers.

### Step 2

- Set appropriate pitch from center of base shelf to drain. Remember to allow for the thickness of the tile.
- Level base shelf.
- Plumb outside face of curb. (This will provide for built in ⅜" pitch to the top of the curb.)

### Step 3

- Vigorously compact floor type mortar to a voidless fill on both sides of the pan through top of curb.
- Hold straight edge to outside face of curb—tap lightly to ensure straightness.
- Check for pitch to drain, level and plumb.
- Set tile using dry set mortar (thin set). Industry standards require ⅜" to ⅛" thin set behind tile after twist or beat in. Small trim shapes should be back buttered to ensure proper bond.

## Four Wall Showers

**Note:** In addition to above procedures, be sure drain side face of curb is set flush with wall screeds. Notch score lines on ends of curb and cross supports with utility knife prior to snapping.